

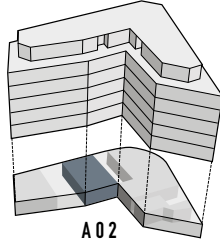
BRÜNIG HOF LUZERN

wohnen & wirken

WINKELBAU, GRUNDRISS LADEN / BÜRO

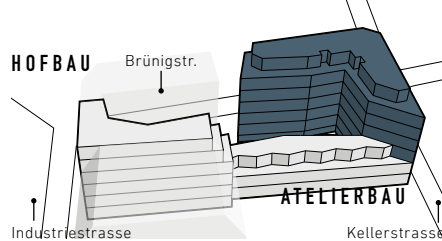
Brünigstrasse 21, Erdgeschoss / A02 / Fläche, 150.4m²

WINKELBAU



A02

WINKELBAU



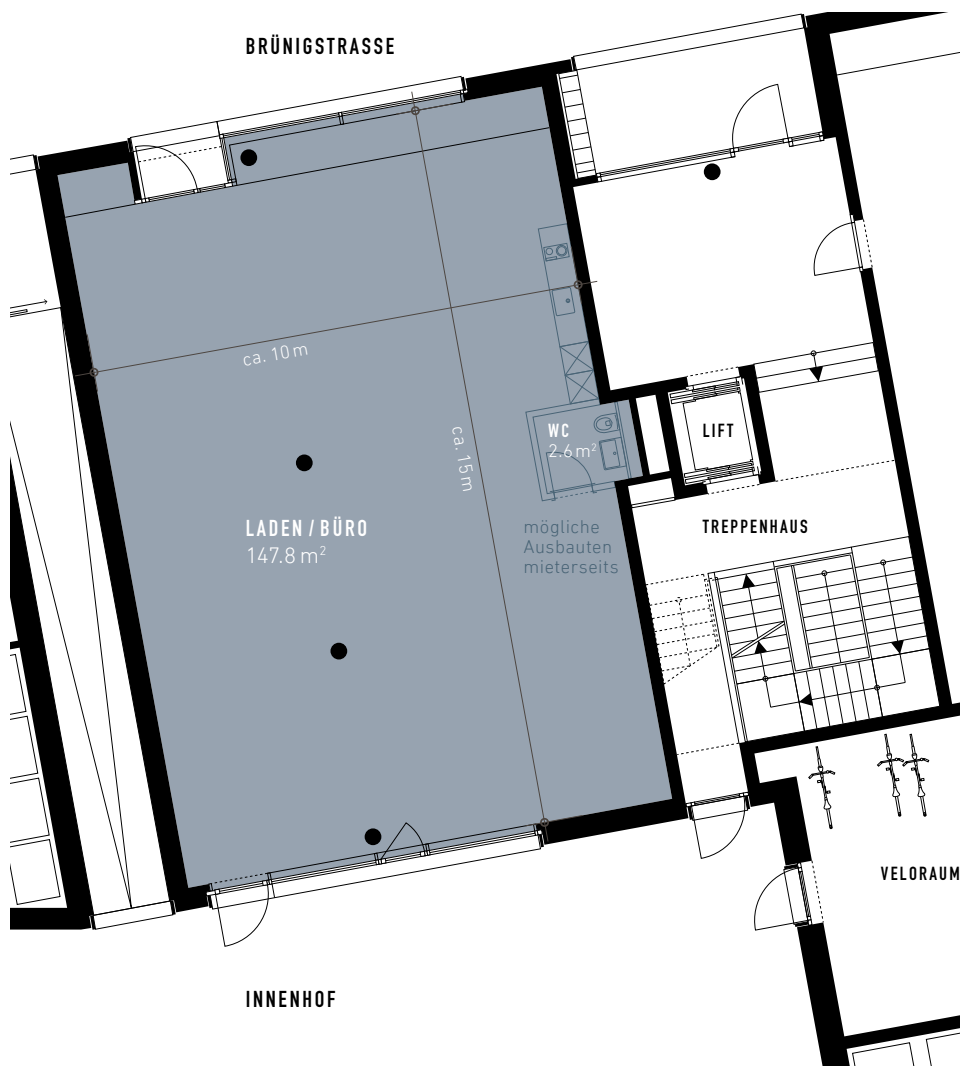
HOFBAU

Brünigstr.

Industriestrasse

Kellerstrasse

ATELIERBAU



BRÜNIGSTRASSE

LADEN / BÜRO
147.8 m²

INNENHOF

WC
2.6 m²

LIFT

TREPPENHAUS

VELORAUM

mögliche Ausbauten
mieterseits

0 1 2 3 4 5m

